

NUCTECH™ CX Series

Carry-on Baggage X-ray Inspection System



WWW.NUCTECH.COM

EN

Technical Features

- Unsurpassed high image quality by optimized X-ray generator and high resolution detectors
- Advanced dual-energy material classification technology can accurately detect threats and contrabands
- Efficient operating with ergonomically designed user interface
- Threat Image Projection (TIP) ready X-ray systems
- Optimized concept of operations, centralized image identify and storage capability implemented by various network applications
- Compact and portable design enables minimal footprint and rapid relocation

Summary

Nuctech Company Limited offers a series of X-ray inspection systems for carry-on baggage screening, required by all security and customs applications. The carry-on baggage X-ray inspection system comes from the best proven CX products platform, which features the world-leading image performance, ergonomic user interface, advanced imaging enhancing algorithms, powerful functions and network applications with high reliability, safety and economy.

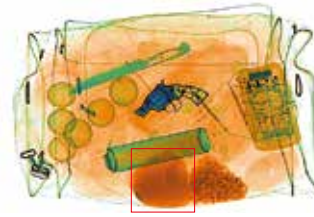
With various tunnel size and portability, the CX carry-on baggage X-ray inspection system can fully meet screening demands at airports, mass transit stations, critical infrastructures, post offices, and big events, etc.



NUCTECH™ CX Series Carry-on Baggage X-ray Inspection System



Advanced material classification:
Orange for organic, blue for metal
and green for mixed material



Automatic detection and
alarm of contrabands

Technical Data

General Specifications

Technical Principle	Dual-energy X-ray Imaging
Image Enhancement	Color/BW, negative, high/low penetration, organic /inorganic stripping, general enhancement and multi-absorptivity, etc.
Image Zoom	Stepwise/stepless zoom, up to 32 times enlargement
Image Recall	All preceding images recallable
Explosives & Narcotics Detection	Explosives & narcotics alarm and highlight according to atomic number signature
High Density Region Alarm	Impenetrable region alarm and highlight, for possible concealing of threats and contrabands
Threat Image Projection	Inserting fictional, but realistic images of threat items into baggage during screening operation, for maintenance of vigilance, as well as training and assessment of image identification capability
Image Archive	Up to 50,000 images stored automatically, enable transferring to USB disk, and converting to JPG, BMP and other general formats
Miscellaneous Functions	Time/date display, counters, user management, system-on/X-ray-on timers, power on self-test, built-in diagnostic facilities, dual-direction scanning, system log, system standby and stimulant training, etc.
Network Applications	Multiple remote applications available based on Ethernet LAN and windows platform, such as image centralized storage and identify, recheck workstation, and network TIP, etc.
Radiation Safety	Less than 1μGy/h (5cm from the housing), complying with all published international radiation safety and health standards
Film Safety	Guaranteed for high speed film up to ASA/ISO1600 (33DIN)

Products	CX5636B	CX6040BI	CX6040D (Dual-view)	CX6550BI	CX7555BI
Tunnel Dimensions (W×H)	566mm×370mm	606mm×420mm	620mm×420mm	655mm×503mm	755mm×555mm
Load Capacity	160Kg	160Kg	160Kg	160Kg	160Kg
Conveyor Height	680mm	680mm	680mm	680mm	750mm
Conveyor Speed	0.2m/s	0.2m/s	0.2m/s	0.2m/s	0.2m/s
Wire Resolution	38AWG	38AWG	38AWG	40AWG	38AWG
Steel Penetration	38mm	38mm	38mm	40mm	38mm
Dimensions (L×W×H)	2042mm×810mm ×1251mm	2042mm×850mm ×1300mm	2392mm×1206mm ×1301mm	2042mm×899mm ×1384mm	2340mm×1000mm ×1500mm
Weight	430Kg	530Kg	820Kg	600Kg	600Kg
Power Consumption	0.8kVA	0.8kVA	0.9kVA	0.8kVA	0.8kVA

Note: Image performance specifications are based on test piece complying with Civil Aviation Administration of China Standard

FT-EN-20160518

NUCTECH COMPANY LIMITED

Address: 2/F Block A, Tongfang Building,
Shuangqinglu, Haidian District,
Beijing 100084, P.R.China

Tel: +8610 50980999
Fax: +8610 62788896

NUCTECH HONG KONG COMPANY LIMITED

Address: Rooms 1403-04 on the 14th Floor
of China Resources Building, No.26
Harbour Road, Wanchai, Hong Kong

Tel: +852-27221828
Fax: +852-27221849

NUCTECH SYDNEY PTY LTD.

Address: Suite 404, 77 Dunning Avenue,
Rosebery NSW 2018 Australia

Tel: +612 96622307/96622317
Fax: +612 96622371

NUCTECH WARSAW COMPANY

LIMITED SP. Z O. O.

Address: ul. Pandy 18,02-202 Warsaw Poland

Tel: +48 22 6591545
Fax: +48 22 6581483

NUCTECH COMPANY LTD SUC.

ARGENTINA

Address: ECHEVERRIA 1515, 6A, BELGRANO,
CABA, CP1428, ARGENTINA

Tel: 0054-11-4782 2486
Fax: 0054-11-4785 0726-108

NUCTECH COMPANY LIMITED

(VENEZUELA BRANCH)

Address: Av. San Juan Bosco, Entre 2da y
raTransversal, Centro Altamira, Piso 14,
Ofc."C", Caracas, Venezuela

Mobile: +58412 321 7001
Tel: +58212 261 1050/261 9074
Fax: +58212 261 0618

NUCTECH MIDDLE EAST FZE

Address: Office 321, Building 5WA, Dubai Airport
Free Zone, P.O.Box 371820, Dubai, U.A.E

Tel: +971-4-2602308
Fax: +971-4-2602306
Email: cuiwei@nuctech.com

Nuctech South Africa (Pty) Ltd.

Address: Unit B13, 5 Galaxy Ave, Linbro Business
Park, Sandton, Johannesburg, South Africa

Tel: +27 (11) 6080480
Fax: +27(11) 6080525

NUCTECH DO BRASIL LTDA.

Address: Rua Bandeira Paulista Road No. 530,
9th floor, room No.91-94, Itaim Bibi
District, São Paulo/SP, Brasil

Tel: +55-11-30785449
Fax: +55 11 30785759

Copyright ©2016 NUCTECH COMPANY LIMITED, All Rights reserved.

Design and specifications are subject to change without notice.

Printed in CHINA, May 2016.



NUCTECH HAS BEEN AWARDED THE CERTIFICATE OF QUALITY MANAGEMENT SYSTEM (ISO9001:2008)
NUCTECH HAS BEEN AWARDED THE CERTIFICATE OF ENVIRONMENTAL MANAGEMENT SYSTEM (ISO14001:2004)
NUCTECH HAS BEEN AWARDED THE CERTIFICATE OF OCCUPATIONAL HEALTH AND SAFETY MANAGEMENT
SYSTEM (GB/T28001-2011)

