

# YF-280W

Electromagnetic door lock

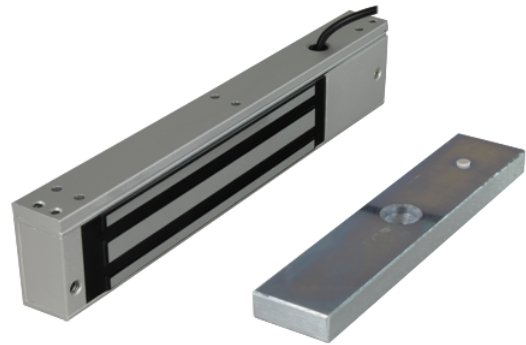
For single doors

Fail Safe mode

Retention force 280 Kg

Retention Area 35 x 155mm

IP67 exterior rating



Electromagnetic lock for single doors

Incorporates monitoring signal

Output of contact NO/NC/COM

It has status LED

Linear load resistance 280 Kg

Exterior Maglock

# Specifications

Door type	Single, 1 door
Opening mode	Fail Safe
Retention force	280 Kg
Power supply	DC 12 V / 500 mA, DC 24 V / 250 mA
Armature size	35 (H) x 155 (W) mm
Dimensions	48.5 (D) x 25 (H) x 250 (W) mm
Weight	2,5 Kg
Temperature	-10° C ~ +55° C
Protection	IP67